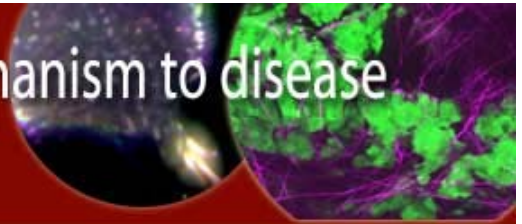


# Frontiers in Cell Migration from mechanism to disease

September 16-18, 2008 NIH  
Natcher Conference Center, Main Auditorium  
Building 45, Bethesda, MD

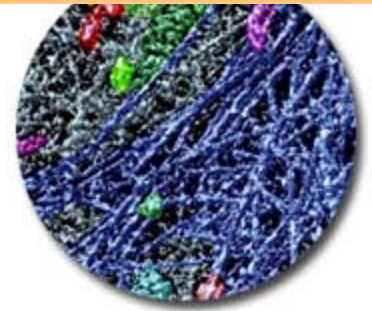


## Conference Chairs

*Rick Horwitz* (University of Virginia)  
*Tom Parsons* (University of Virginia)

## Keynote Lectures

*John Condeelis* (Albert Einstein College of Medicine)  
*Mark Ginsberg* (University of California - San Diego)  
*Doug Lauffenburger* (Massachusetts Institute of Technology)



## Scientific Sessions and Speakers

### Adhesions at the Edge

*Anna Huttenlocher* (University of Wisconsin - Madison)  
*Rick Horwitz* (University of Virginia)  
*Stefan Linder* (University of Munich, Germany)

### Integrin Activation and Interactions

*Iain Campbell* (University of Oxford, England)  
*Robert Liddington* (Burnham Institute for Medical Research)  
*David Critchley* (University of Leicester, England)  
*Kenneth Taylor* (Florida State University)

### Organization of the Protrusion

*Dorit Hanein* (Burnham Institute for Medical Research)  
*Alex Mogilner* (University of California - Davis)  
*Laura Machesky* (Beatson Research Institute, Scotland)  
*Kenneth Jacobson* (University of North Carolina - Chapel Hill)  
*Tatyana Svitkina* (University of Pennsylvania)

### Regulation of Migration

*Richard Klemke* (University of California - San Diego)  
*Tony Pawson* (Samuel Lunenfeld Research Inst., Canada)  
*Tom Parsons* (University of Virginia)  
*Margaret Frame* (Beatson Research Institute, Scotland)

### Rho GTPases – a Regulatory Hub

*Martin Schwartz* (University of Virginia)  
*Klaus Hahn* (University of North Carolina - Chapel Hill)  
*Gaudenz Danuser* (Scripps Research Institute)

### Polarizing the Cell

*Peter Devreotes* (Johns Hopkins Medical School)  
*Irina Kaverina* (Vanderbilt University)  
*Jason Haugh* (North Carolina State University)

*Diane Barber* (University of California - San Francisco)

### Cells in 3-Dimensions

*Kenneth Yamada* (National Institutes of Health/NIDCR)  
*Yu-Li Wang* (University of Massachusetts)  
*Valerie Weaver* (University of California - San Francisco)

### Migration and Cancer

*Joan Brugge* (Harvard Medical School)  
*Peter Friedl* (Radboud University, Netherlands)  
*Patricia Keely* (University of Wisconsin - Madison)

### Migration in Regeneration and Immune Surveillance

*Paul Martin* (University of Bristol, England)  
*Fiona Watt* (Cambridge Research Institute, England)  
*Linda Griffith* (Massachusetts Institute of Technology)  
*Ronen Alon* (Weizmann Institute of Science, Israel)

### Migration in Development

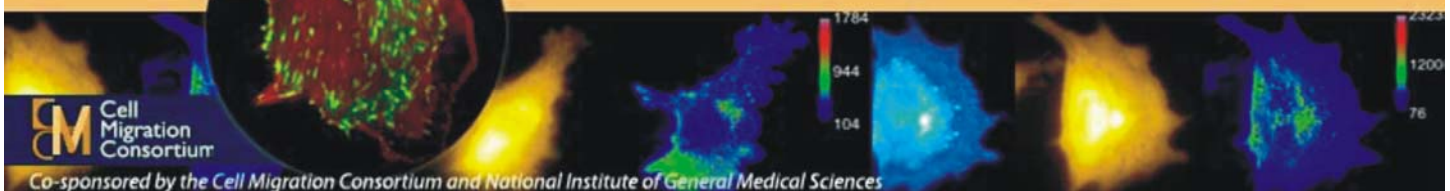
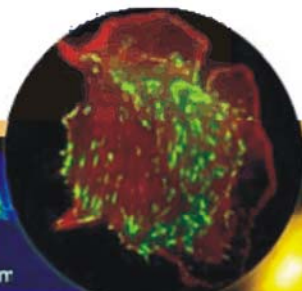
*Jean Schwarzbauer* (Princeton University)  
*Denise Montell* (Johns Hopkins Medical School)  
*Scott Fraser* (California Institute of Technology)

### Looking Forward

*Barbara Imperiali* (Massachusetts Institute of Technology)  
*Don Hunt* (University of Virginia)  
*Benjamin Geiger* (Weizmann Institute of Science, Israel)  
*Leslie M Loew* (University of Connecticut Health Center)

## Poster Sessions

For additional information  
and registration, visit  
[www.cellmigration2008.org](http://www.cellmigration2008.org)



Cell Migration Consortium

Co-sponsored by the Cell Migration Consortium and National Institute of General Medical Sciences